

*Tired of price inflation and supply chain issues? Need stock to sell?*

## **Gordon Brothers in partnership with Liquidity Services has for offer one USED 2013-year model Volvo L180G Wheel Loading Shovel at a competitive price!**

Serial Number, VCEL180GH00019969

Year Model, 2013 / Service meter reading 15,325 hours.

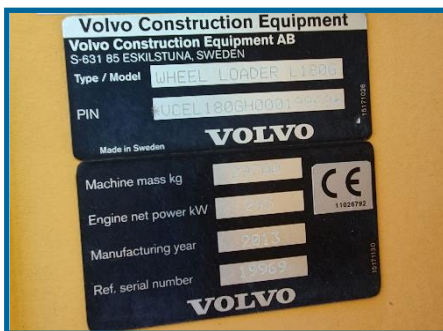
Volvo D13H-E Engine EU Stage III, Rated 245kW (245hp)

CE certification

Wheels & tyres, Bridgestone 775/65R29 rated at circa 40% wear remaining.

No attachment fitted.

**VOLVO**  
Construction Equipment



Located Jouamaa, Fahs-Anjra, Tangier Morocco, available for immediate shipment.

Dimensions (Mtr) Length 9.00mtr x Height 2.96mtr x Width 3.58mtr.

Net Weight (Operating) 26,460kgs (Attachment depending).

Viewing by appointment, for more information contact:

**David Wileman**

+44 (0) 7919 477491 | [dwileman@gordonbrothers.com](mailto:dwileman@gordonbrothers.com)

**LIQUIDITY**  
SERVICES

**Gordon Brothers**  
1903